



SEWINGRABBIT.COM

KNOT TOTE ePATTERN

[free pattern by The Sewing Rabbit](#)

Knot Tote Pattern

ONE SIZE

Jess Abbott: www.sewingrabbit.com

Skill Level: Beginner

Time Needed: 1 Hour

The knot tote is the perfect purse / bag for learning how to sew. This beginner-friendly pattern is easy to make, and yields adorable results. The only thing you need to know how to do to sew this purse, is sew a straight line! Perfect for kids, teens, and adults. A great handmade gift.

FINISHED BAG MEASUREMENTS

- 18" Wide
- 12" High (to top of purse)
- 18" High (to top of handle)

SEAM ALLOWANCE

The pattern includes a ¼" seam allowance.

FABRIC REQUIREMENTS

- 1 yard Exterior
- 1 yard Lining

FABRIC RECOMMENDATIONS

Cotton & Cotton Blend, Denim, Home Dec fabric, Linen, Velvet, Corduroy

**Please note - if using a lightweight cotton fabric (like linen), a light - mid-weight interfacing is recommended.*

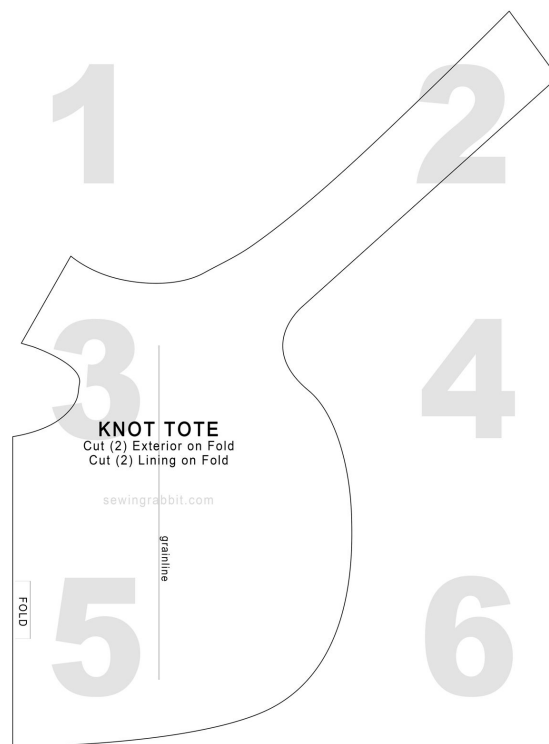
SUPPLIES NEEDED

- Fabric as listed above
- Coordinating thread
- Scissors / rotary cutter
- Standard sewing needle
- Pins
- Sewing machine (basic sewing essentials)

Printing and Piecing Instructions

- All pages should be printed on standard paper. Using Adobe Reader (free to download) is recommended but may not be necessary.
- Make sure that “Auto Rotate and Center” is checked and that “Scaling” is NOT checked (scaling may be in a drop-down menu - make sure to find it and check the setting). If you have a newer version of Adobe Reader, your options might look like “Fit to Size” or “Actual Size”. If that is the case, make sure you choose “Actual Size”.
- To make sure you’re printing the right size pattern, measure the 2 inch by 2 inch test square. Do your troubleshooting here so you don’t print out the wrong size pages.
- If you live outside Canada or the US, print the pages to your standard paper size.
- To connect each page, trim to the grey border (do not cut the grey border off), and match up the numbers of each page with the pattern image diagram below.
- Tape the pages together.
- Once the whole pattern is printed and taped, cut along your size line according to the size chart. You may prefer to trace your size onto tracing paper and then cut it out.

Pattern Diagram



Pattern includes a 1/4" seam allowance.

SEWING INSTRUCTIONS:

Print and cut out pattern pieces.

You will have this when done:



Lay one **exterior fabric** piece on top of one **lining piece**, right sides together.

Pin around all edges, but leave a 3" opening along the bottom.

Sew. Clip / trim seam allowances.

Repeat for other purse pieces.



Turn right side out through opening, push out all seams, and press.

Whipstitch opening closed.

You should now have this (see photo).

Edge stitch around entire edge.



Now, we are going to take the small tabs in the top middle, and literally tie them in a knot, securing with a pin on top.

See Photos:



Sew along top edge.

Repeat for both sides.



You should now have this:



Put the purse pattern pieces right sides together and pin along the purse bottom, stopping approximately 1" before where the purse handle begins.

See Photo.

Sew together.

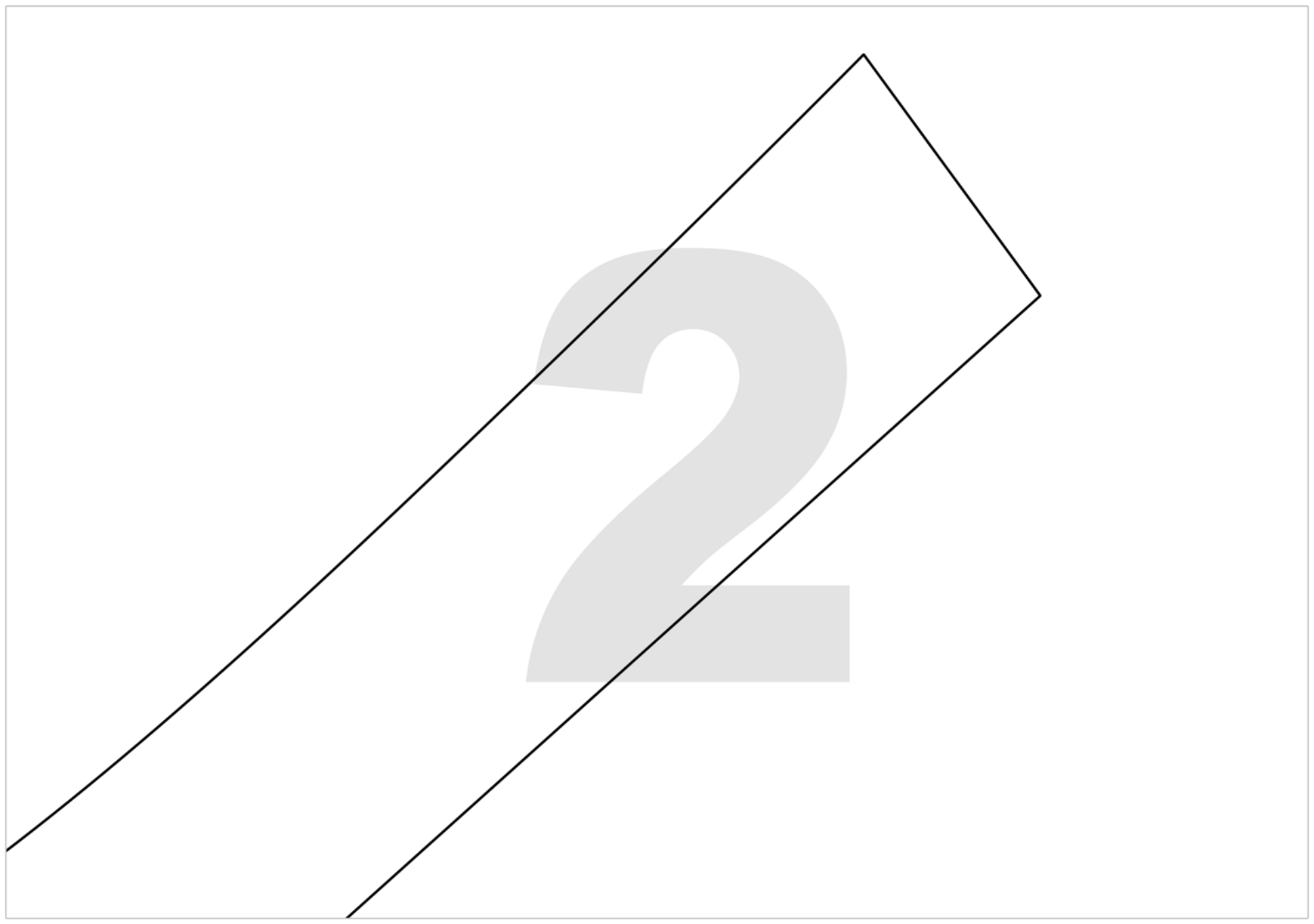


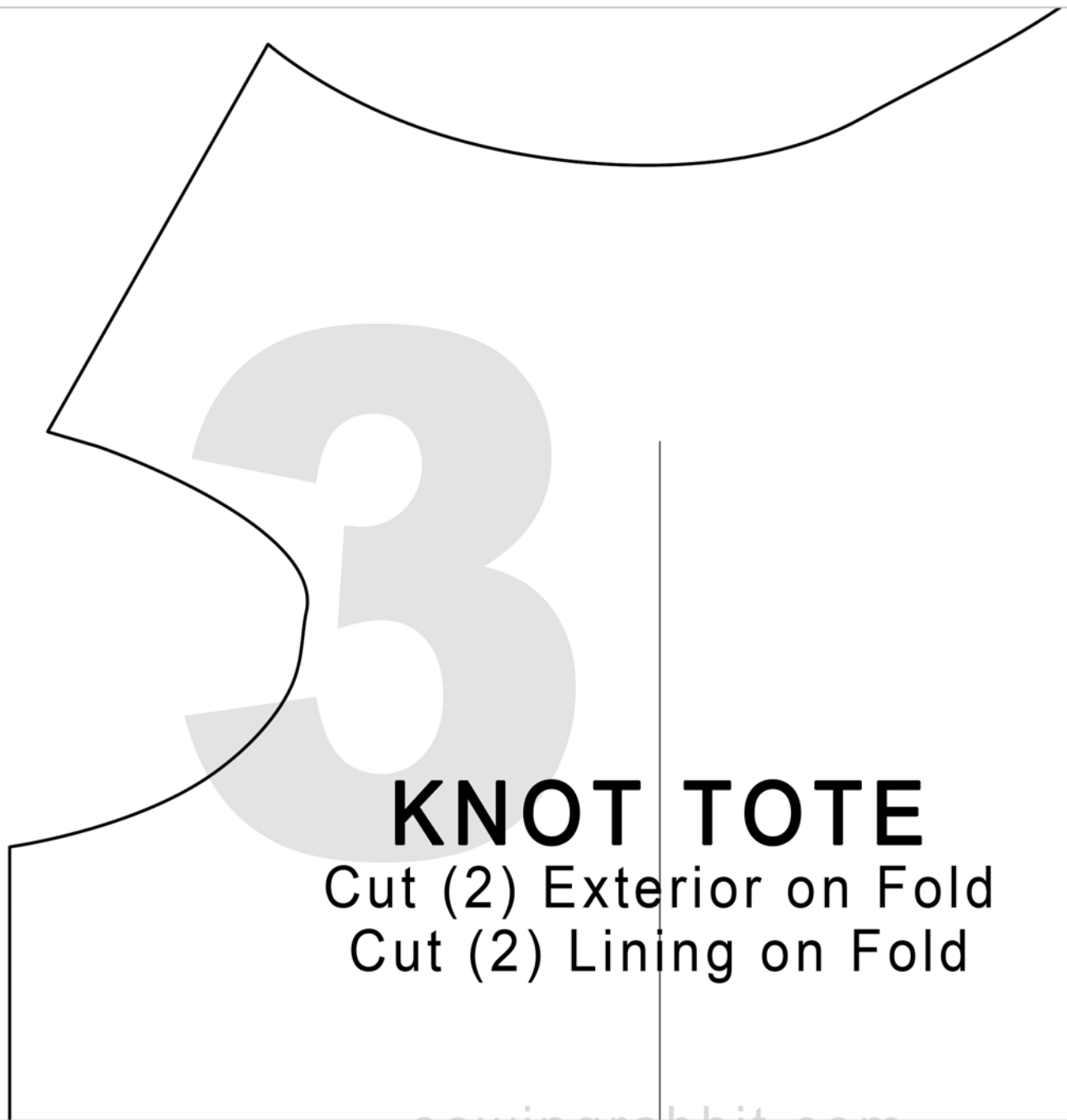
Turn right side out, and knot together straps as you desire - and you are finished!



2"
Test
Square



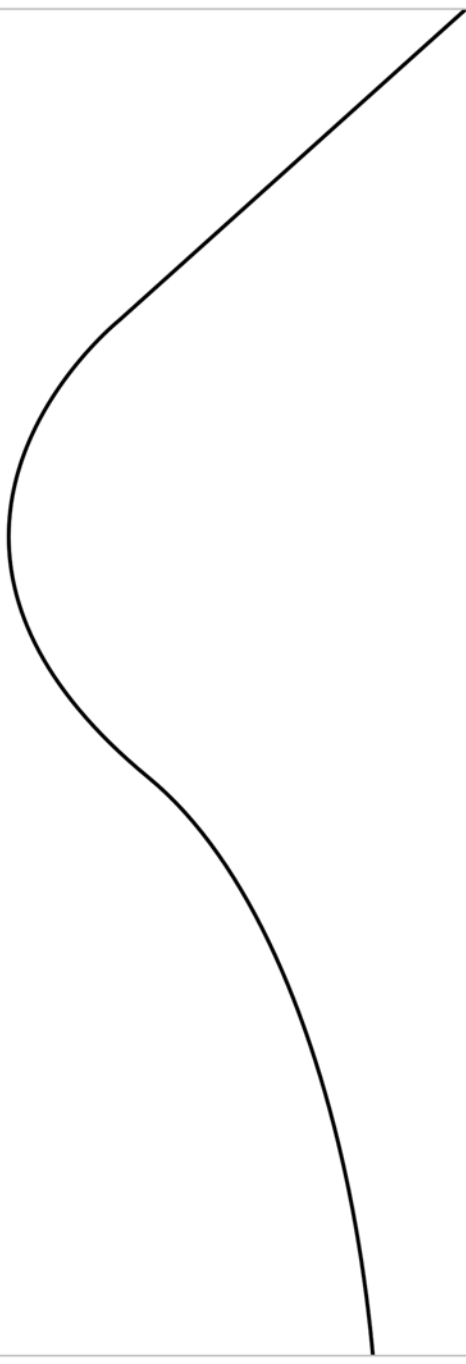




KNOT TOTE

Cut (2) Exterior on Fold

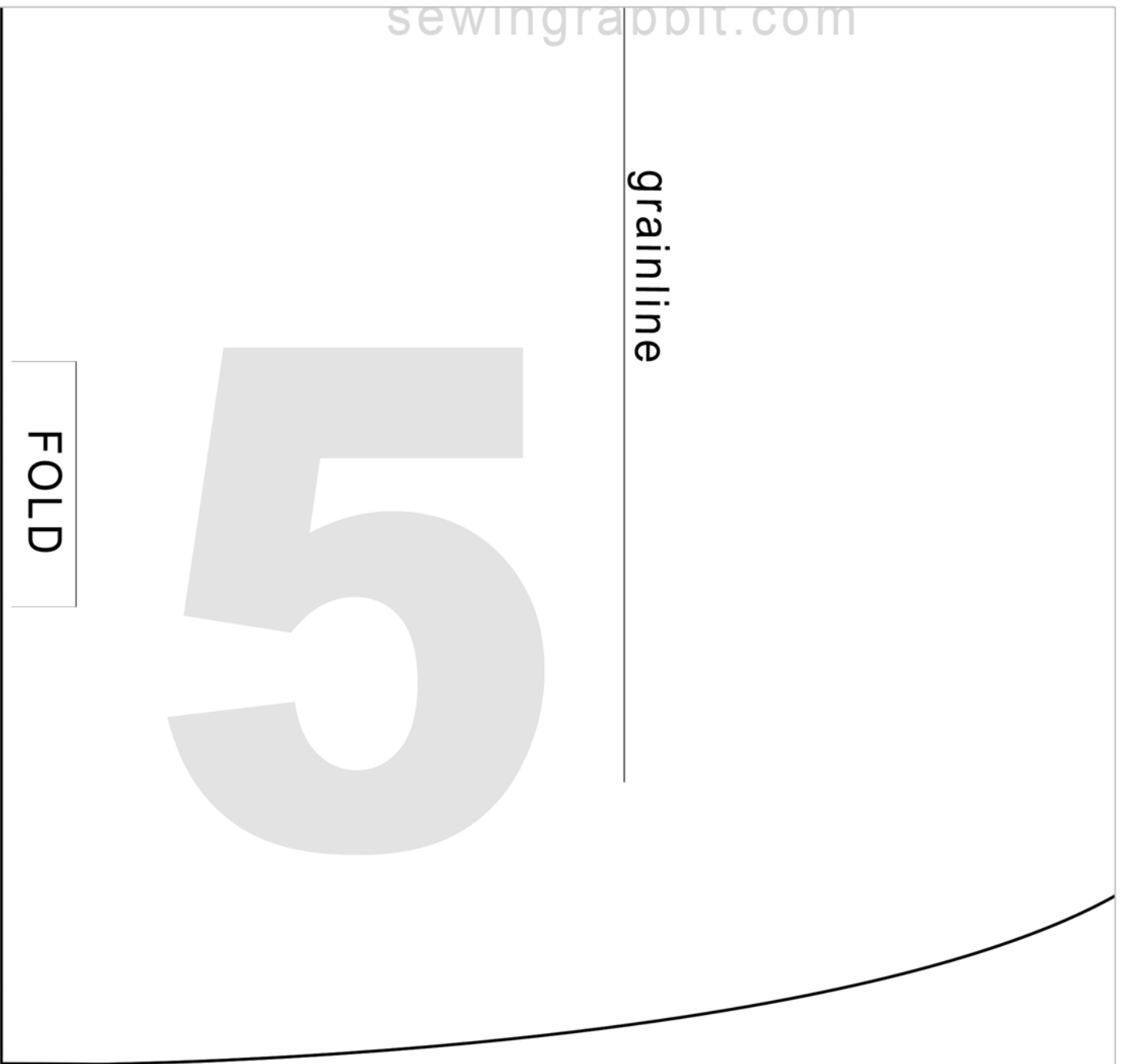
Cut (2) Lining on Fold



grainline

5

FOLD





6