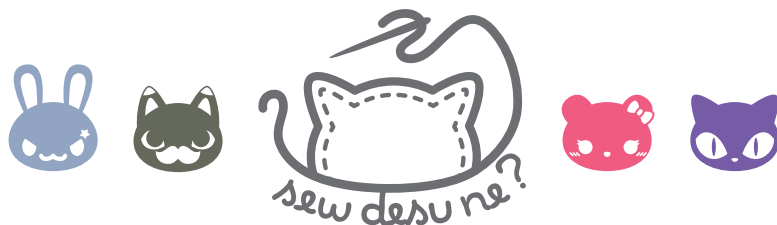


# HEDGEHOG PLUSH



A FREE SEWING PATTERN BY



# HEDGEHOG PLUSH

These furry hedgehogs are a fun and safe-to-hug variety compared to their real life counterparts! With the help of some fluffy faux fur, you can make a plush version of the adorable little woodland creature.

They feature a sweet round body with a pudgy belly, tiny arms and legs, and a cute nose. But where it really shines is the big fuzzy back, perfect for showing off any bits of faux fur you might have stashed away.

## MAKES:

One plush: about 7" tall, 5½" wide, and 4" long (not including arms, legs, ears, and snout)

## DIFFICULTY:



The trickiest part of this plush is definitely working with the faux fur. The rest of the parts are pretty straightforward. But if you work carefully with the fur until those steps are done, it's easy going from there!

## SKILLS USED:

- Fusible web applique
- Curved sewing
- Darts
- Ladder stitch
- Basting



sew desu ne?

| [WWW.CHOLYKNIGHT.COM](http://WWW.CHOLYKNIGHT.COM) |

## materials & tools:

- ¼ yd. or 9" x 15" of fur fabric for back of body
- ¼ yd. or 9" x 9" of smooth fabric for body front
- 1/8 yd. or 5" x 16" of smooth accent fabric for snout and legs
- 3" x 3" piece of black applique fabric (such as cotton, felt, or flannel) for eyes and nose
- 2" x 2" piece of white applique fabric for eye shines
- 6" x 6" piece of light or heavy duty fusible web
- sewing thread to match main fabric and applique fabrics
- poly-fil stuffing
- basic sewing tools (sewing machine, scissors, iron, needles, pins, fabric marker, seam ripper)



**10mm pile  
faux fur**

vs.



**35mm pile  
faux fur**

## SUGGESTED FABRICS:

### faux fur

Fluffy faux fur will really help set your animal apart and make your hedgehog look more like the real deal. Smooth fabrics like minky or variations of fleece can be used for the snout and legs.

It's really that contrast between smooth and fluffy that will help make your hedgehog look true to form and less 'naked'.

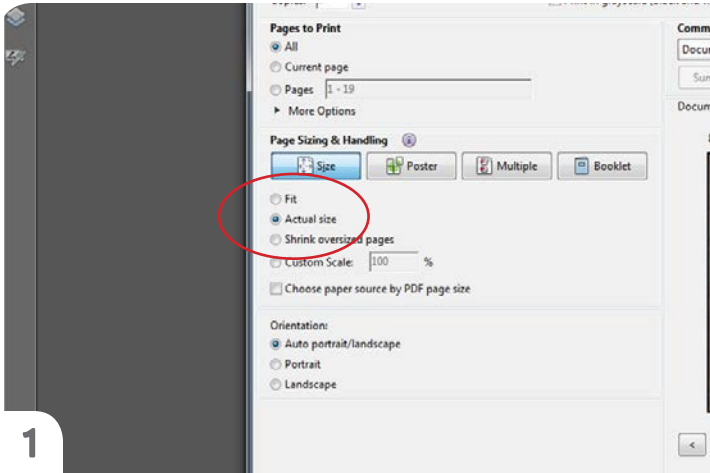
The samples were made using **SHANNON MINKY** in the *lux fur*, *luxury shag*, *cuddle fawn*, and *cuddle angora* varieties. *Cuddle rose* was also used in testing. A **10MM-40MM PILE** is a good fur length to strive for.

sew desu ne?

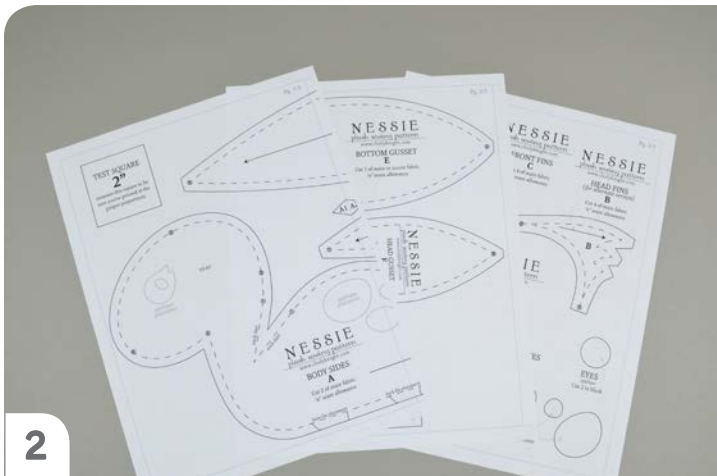
| [WWW.CHOLYKNIGHT.COM](http://WWW.CHOLYKNIGHT.COM) |

## printing the pattern:

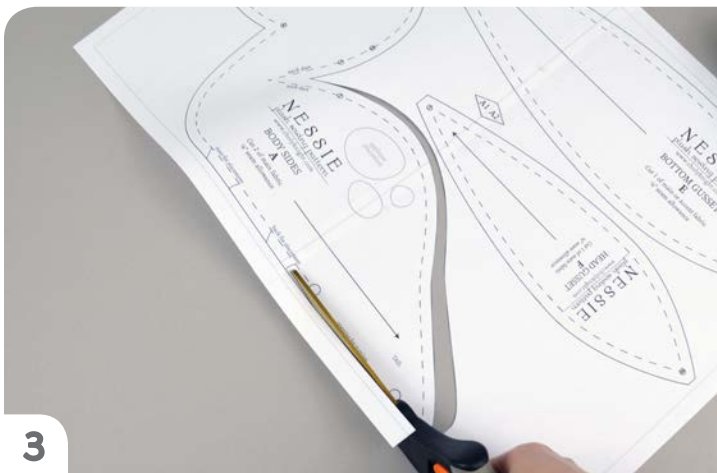
To print the pattern, set your computer to print **PAGES 15-16**. If you're unfamiliar with printing and assembling a .pdf pattern, read the steps below.



At the print dialog box, check the box that says print at “Actual Size” or 100%. Any other selection (such as “Fit to page”) will distort the pattern so it’s slightly larger or smaller and we don’t want that.



Print the pages needed for the file. You might have one or more. Either way, be sure you have the full collection by noting the page numbers in the corner.



You can trace the patterns onto a different paper, or you can also just cut them straight from the printer paper. They might be a little hard to pin through, so you might want to use your longest pins. But you could also use pattern weights or trace the outlines onto the fabric with a washable marker and cut them out from there.

sew desu ne?

| [WWW.CHOLYKNIGHT.COM](http://WWW.CHOLYKNIGHT.COM) |

## cutting the fabric:



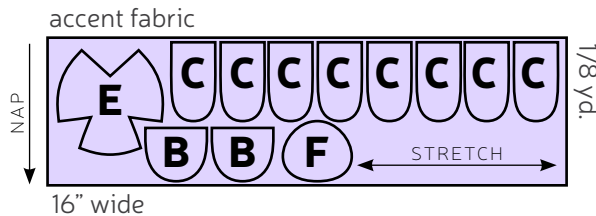
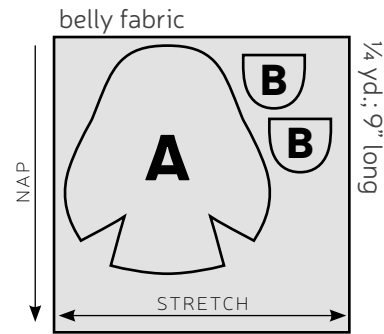
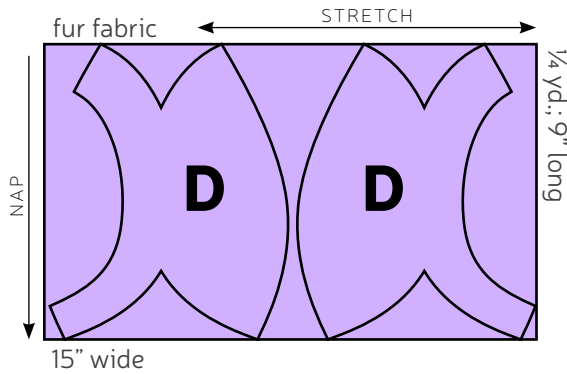
**1** Place pattern on the fabric, and make sure the stretch line matches the stretch of the fabric. The nap line should go in the direction of the fur.

**2** Pin the pattern in place, use pattern weights, or trace the outline of the pattern with a washable marker.

**3** Using the paper as a template, cut out the fabric. Cut the required amount according to the pattern. Make small cuts through the back of the fabric only to avoid cutting too much fur.

**4** For all fur fabrics, shake or lint roll the excess fuzz away.

## cutting layout:

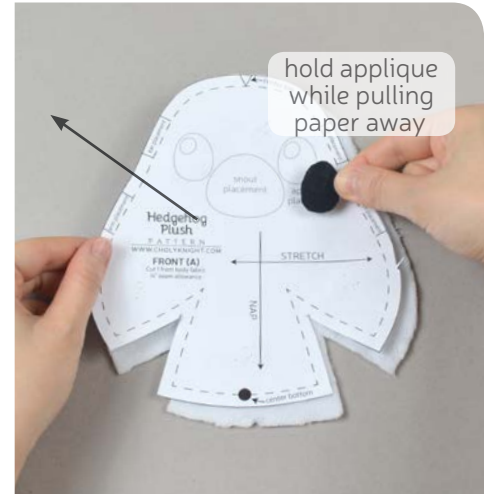
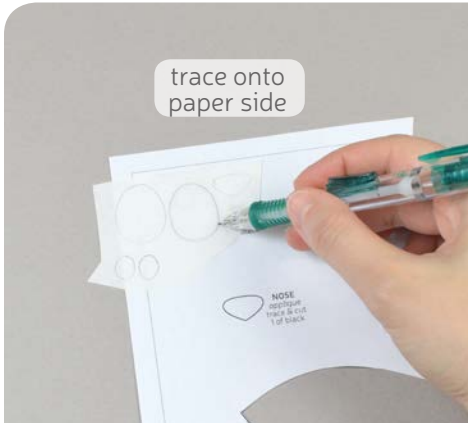


## BEFORE YOU BEGIN:

- Briefly read the project instructions so you know what to expect.
- If desired, mark the cut fabric pieces with the markings and symbols from the pattern. Or wait until the applicable step before transferring.
- Note that a 1/4" seam allowance is used throughout the project.

sew desu ne?

| [WWW.CHOLYKNIGHT.COM](http://WWW.CHOLYKNIGHT.COM) |



## 1. PREPARE THE FACE APPLIQUE

- Take your fusible web and trace all of your applique pieces onto the smooth (paper) side. You should have two **eyes**, two **eye shines**, and a **nose**.
- Fuse the bumpy (adhesive) side onto the wrong side of your applique fabric. The eyes and nose should go on black, and the eye shines on white.
- Cut out the eyes and arrange them on the **FRONT (A)** piece. Set your paper pattern on top of the fabric piece (right sides up). Align the eye piece on top where the placement markings are. Then carefully pull the paper pattern away while holding the applique piece in place.

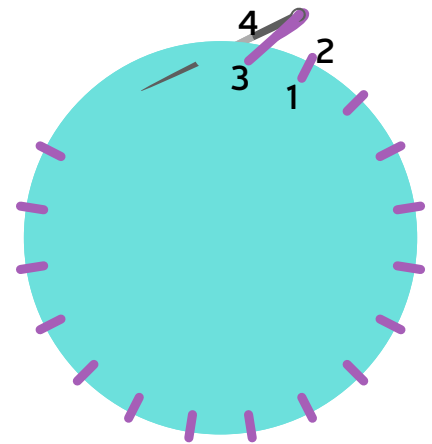
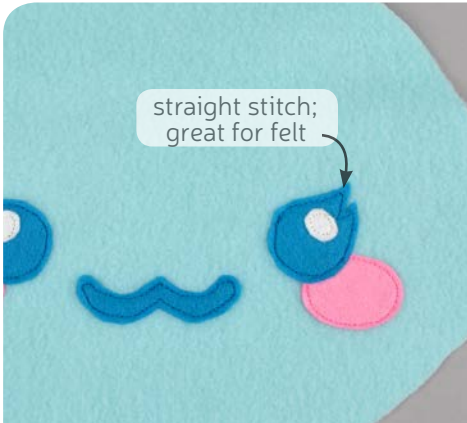


## 2. FUSE THE APPLIQUE

- Fuse the eye pieces in place with your iron.
- Next, move onto the smaller eye shine pieces. Fuse them the same way as you did the eyes, using the paper pattern and photos as a guide.  
If you used heavy duty fusible web, you can keep the pieces fused without sewing, or you can sew them in place a number of ways. I've used a zigzag stitch here.  
→ **Refer to the next step for some other applique options.**
- Don't forget to add a nose to the **SNOUT (E)** following the same process.

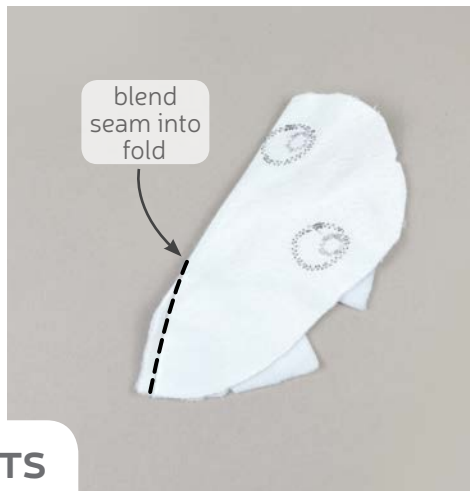
sew desu ne?

| WWW.CHOLYKNIGHT.COM |



## 2a. OTHER APPLIQUE OPTIONS

- Other good options for applique include a straight stitch, which involves sewing around the edge of the applique pieces with a straight stitch using matching thread -- about 1/8" in from the edge.
- You can also applique by hand; I prefer a whip stitch. Thread a hand-sewing needle with some matching thread and knot it. Bring the thread up from the back of the project; about 1/8" in from the edge of the applique shape. Bring it down perpendicular from the curve, just outside of the applique shape. This completes one stitch.
- For the next stitch, bring the needle back up about 1/8" away from the previous stitch and 1/8" in from the edge just as in the first stitch. Once again, bring it down just outside the applique shape. Continue this way until you've sewn around the shape.



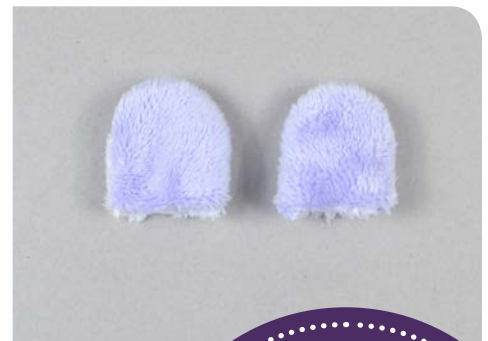
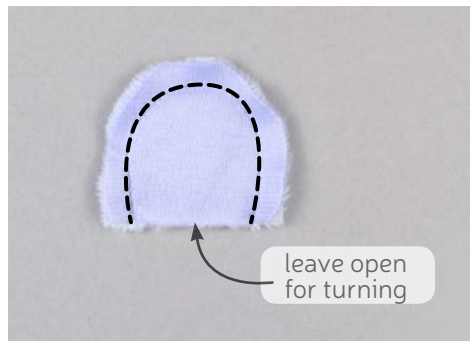
## 3. SEW THE FRONT DARTS

- Grab your **FRONT** piece (A). Note the two wedge shapes found in the bottom corners of the piece -- these are **darts**. To sew them, begin by folding the fabric along the point of the dart to match up the slanted lines.
- Sew the **dart** by starting at the opening and sew down to the point. Try to blend your stitching into the fold so it makes a smooth transition and a rounder finished plush.
- Repeat this with the remaining dart on the other side of your front piece. Your front should now have two finished darts total.

**darts:**  
A wedge-shaped gap found in a pattern. When sewn in fabric, it creates a tuck in the fabric and develops a 3D shape. The diagonal sides of the wedge are the **LEGS**; these are matched up and sewn to the **POINT** of the dart.

sew desu ne?

| WWW.CHOLYKNIGHT.COM |



## 4. SEW THE EARS

- Grab your **EAR** pieces (B). Take one from your main smooth fabric and one from accent fabric. Line them up with right sides facing and raw edges aligning.
- Sew the ears together along the long curved edge. Leave the straight edge free for turning the ear.
- Turn the ear right side out and repeat with the remaining ear pieces for two complete ears.

### basting:

A form of temporary sewing meant to hold pieces in place. A long stitch length is often used for this reason. The finished result is not meant to be seen and sometimes is even removed later (depending on your project).

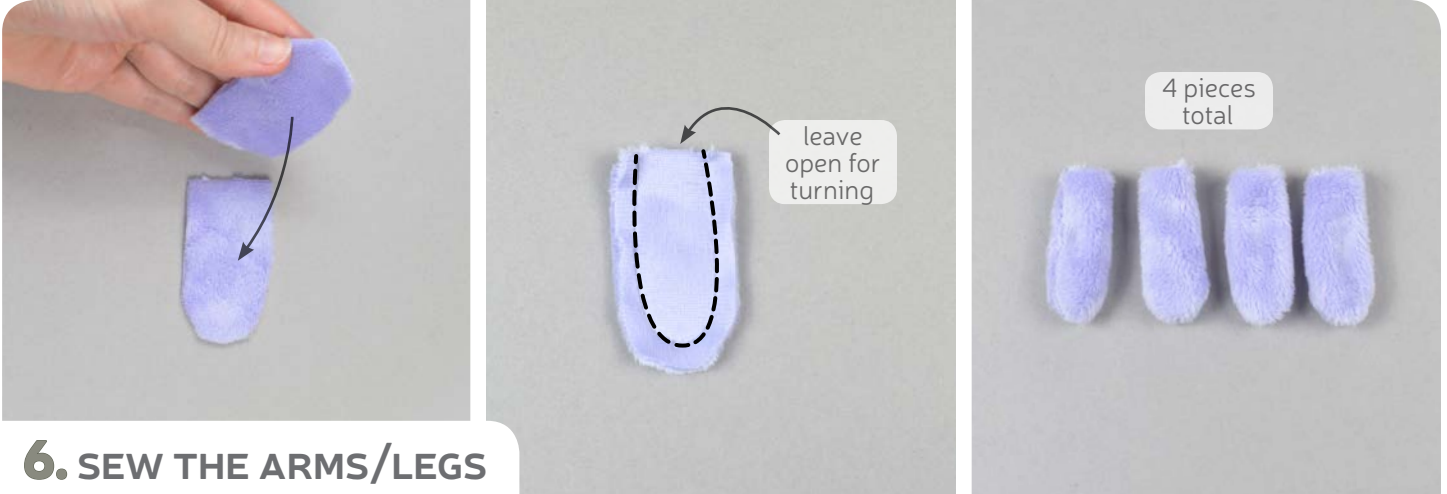
- Take one of your finished **EARS** and fold it with accent fabrics facing. Refer to the **fold line** found on the paper pattern as a guide. The straight edges of the ear should line up.
- Baste the open edge of the ear to hold it for future steps. Repeat with the other ear but in the opposite direction for a mirrored pair.
- If you haven't already, locate the **ear placement lines** found on the **FRONT** (A) paper pattern. Transfer it over to the right side of the fabric. Align the open edge of the ear within these lines with the folds pointing toward the top.
- Flip the ears inward so the accent fabric is down. Line up the edge of the ear with the head. Baste the ear to the head within the seam allowance.



sew desu ne?

| WWW.CHOLYKNIGHT.COM |





## 6. SEW THE ARMS/LEGS

- Grab your **ARM/LEG** pieces (C). Take two and align them with right sides facing and raw edges matching up.
- Sew the arm/leg pieces around the long curved edge. Leave the short straight edge free for turning the piece right side out.
- Turn the arm/leg right side out through the opening. Repeat this step with your remaining arm/leg pieces so you have four arms/legs total (2 arms and 2 legs).



## 7. BASTE THE ARMS

- Stuff each **ARM/LEG** (C) lightly with stuffing so they take shape.
- If you haven't already, locate the **arm placement lines** found on the **FRONT** (A) paper pattern. Transfer them over to the right side of your fabric. Take two of the sewn arm/leg pieces; these will be your arms. Align the open edge of the arms within these placement lines.
- Flip the arms inward so they point toward the center. Baste the opening of the arms to the edge of the front fabric within the seam allowance so it holds them for future steps.

sew desu ne?

| [WWW.CHOLYKNIGHT.COM](http://WWW.CHOLYKNIGHT.COM) |



## 8. BASTE THE LEGS



- Grab your remaining two **ARM/LEG** pieces (C). These will be your legs. Take the open edge and center it over the **darts** at the bottom of the **FRONT** (A).
- Just like with the arms, flip the legs toward the center. Baste the openings of the legs to the edge of the fabric within the seam allowance.

- Grab your two **BACK** pieces (D). These pieces have **darts** just like the **FRONT** (A) piece -- they are the large wedge shapes found on the top and bottom. Fold the fabric along the point of the dart to match up the curved lines.
- For best results, tuck the fur inside before sewing the seam.
- Sew the **dart** similar to the previous ones. Start at the opening and move down to the point. Then blend your stitching into the fold of the fabric.
- Repeat with both **darts** on the top and bottom. Then repeat with your remaining back piece for two sides total.



sew desu ne?

| [WWW.CHOLYKNIGHT.COM](http://WWW.CHOLYKNIGHT.COM) |



- a. Grab your two **BACK** pieces (D). Align them together with right sides facing and raw edges matching up.
- b. If you haven't already, locate the **opening for turning** markings found on the paper pattern for the back. Transfer it over to the wrong side of these stacked fabrics. Sew the back pieces together along this edge, going through the **darts** (from step 9). But leave an opening in the back where you marked.



- a. Keep the **BACK** piece (D) wrong side out. Lay the back piece on your work space so the large opening is facing up. This opening will be attached to your hedgehog **FRONT** (A). Grab your front piece and line it up with the back you have so far. The **circle marking** on the bottom center of the front piece will line up with the **bottom center seam** on the back. The **notch** on the front piece will line up with the **top center seam**. Pin the front to the back matching up these markings to ensure everything gets lined up properly.
- b. Sew the front to the back all the way around the edge.
- c. Turn the body right side out when complete.

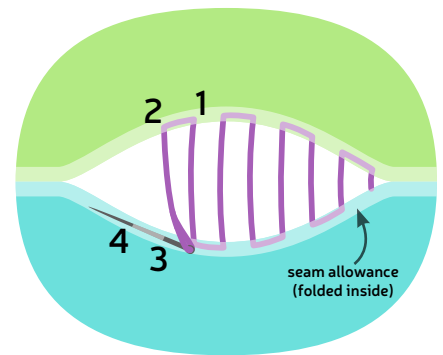
sew desu ne?

| WWW.CHOLYKNIGHT.COM |



## 12. SEW THE BODY CLOSED

- Stuff the body firmly with stuffing, especially near the **dart** area in the **FRONT (A)**. Make sure to stuff enough that the darts no longer have wrinkles in the fabric.
- Once the plush is stuffed, make sure the seam allowances in the opening are tucked inside and prepare to ladder stitch it closed. Thread a hand-sewing needle and knot it at the end. Insert the needle from the inside of the opening and out of the plush near one edge of the opening. This will leave the knot inside the plush.
- Continue from here doing a ladder stitch. Take a 1/8" stitch into the fold of one side of the opening, then go across and take another. Keep going down the opening until you reach the end.

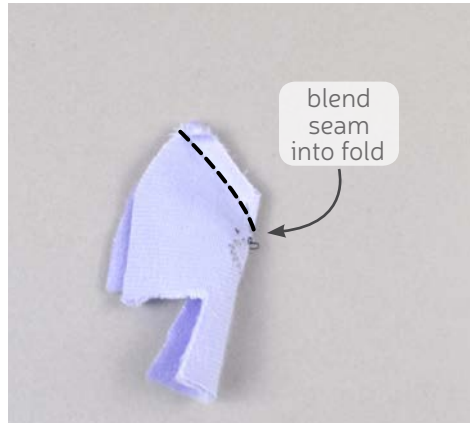


## 13. SNIP THE THREADS

- When you're finished, stitch a knot into the end of the seam. Then insert the needle near the finished knot and out of the plush about 1-2" away.
- Pull the thread through and hold it taut while snipping the thread. The excess thread should sink back inside the plush -- all hidden!

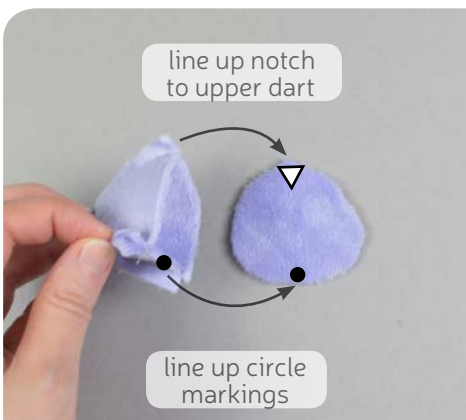
sew desu ne?

| WWW.CHOLYKNIGHT.COM |



## 14. SEW THE SNOUT DARTS

- Grab your **SNOUT** piece (E). Note the tiny wedge shapes around the snout piece. These are **darts**. Fold the snout fabric along the point of one dart to match up the slanted lines.
- Sew the dart by starting at the opening and curving into the fold of the fabric, similar to other darts from previous steps.
- Repeat with the remaining two darts found around the snout. When complete, you should have 3 sewn darts total.



## 15. SEW THE SNOUT BASE

- Grab your **SNOUT BASE** piece (F). Note the **circle** and **notch markings** found on the paper pattern, these points will line up with the snout to ensure proper alignment. The **upper notch marking** will line up with the **top dart** (above the nose). The **circle marking** will line up with the **circle** on the snout, along the center bottom. Pin the snout to the base all the way around, matching up these markings.
- Sew the snout to the base all the way around.
- To turn the snout right side out, cut a small slit into the center of the base. Be sure to cut through the base fabric only.

sew desu ne?

| WWW.CHOLYKNIGHT.COM |



## 16. STUFF THE SNOOT



- a. Turn the **SNOOT** (E/F) right side out through the opening.
- b. Stuff the snout until it takes shape and no longer has any wrinkles in the fabric.



## 17. ATTACH THE SNOOT



- a. Align the **SNOOT** over the face of your hedgehog. Place it with the cut side down, between the bottom edge of the eyes. The paper pattern has a **guideline** for extra help as well. Hold the snout in place by sticking pins down into the base of the snout and through the head of the hedgehog.
- b. Stitch the snout to the face around the base using a ladder stitch.

**congrats!**  
this completes  
your plush! Now  
give it a big  
hug!

sew desu ne?

| [WWW.CHOLYKNIGHT.COM](http://WWW.CHOLYKNIGHT.COM) |

